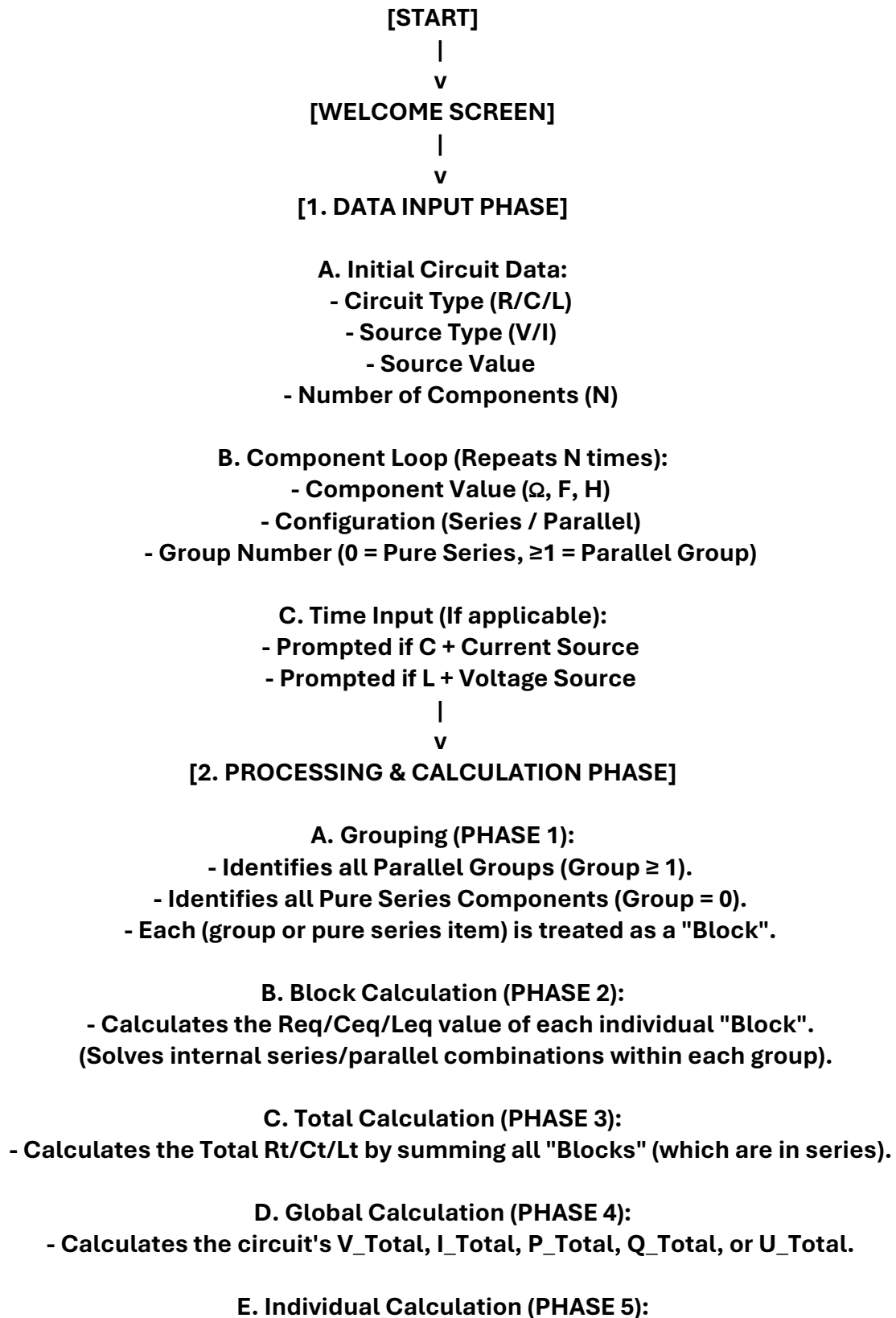


LOGICAL FLOW: R,L,C Master Program



- Uses voltage/current divider rules to find the values
(V, I, P, Q, U) for each individual component within its block.

|
v

[3. RESULTS PHASE]

A. Display Global Circuit Summary

B. Display Parallel Group Summary (if any exist)

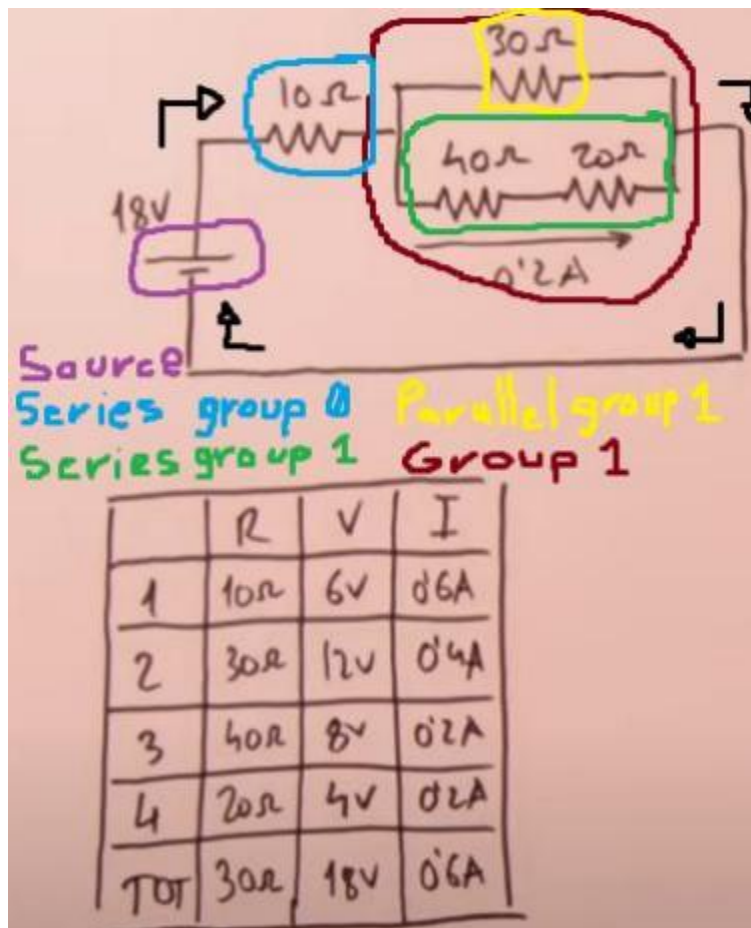
C. Display Individual Component Details (formatted with units)

|
v

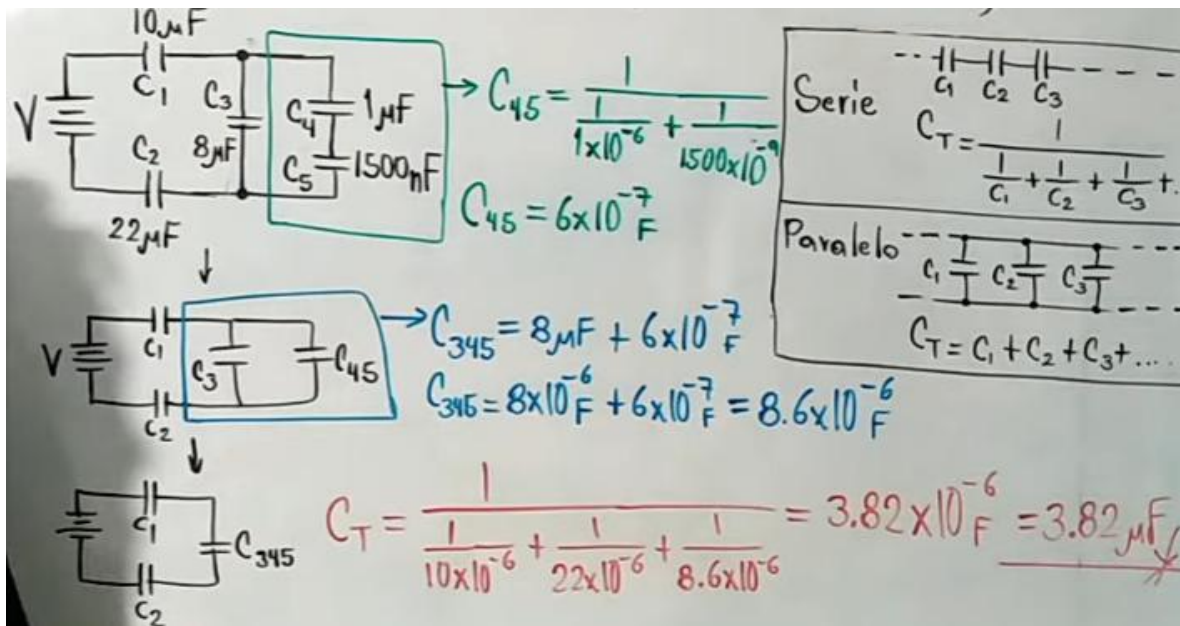
[END PROGRAM]

Examples of use:

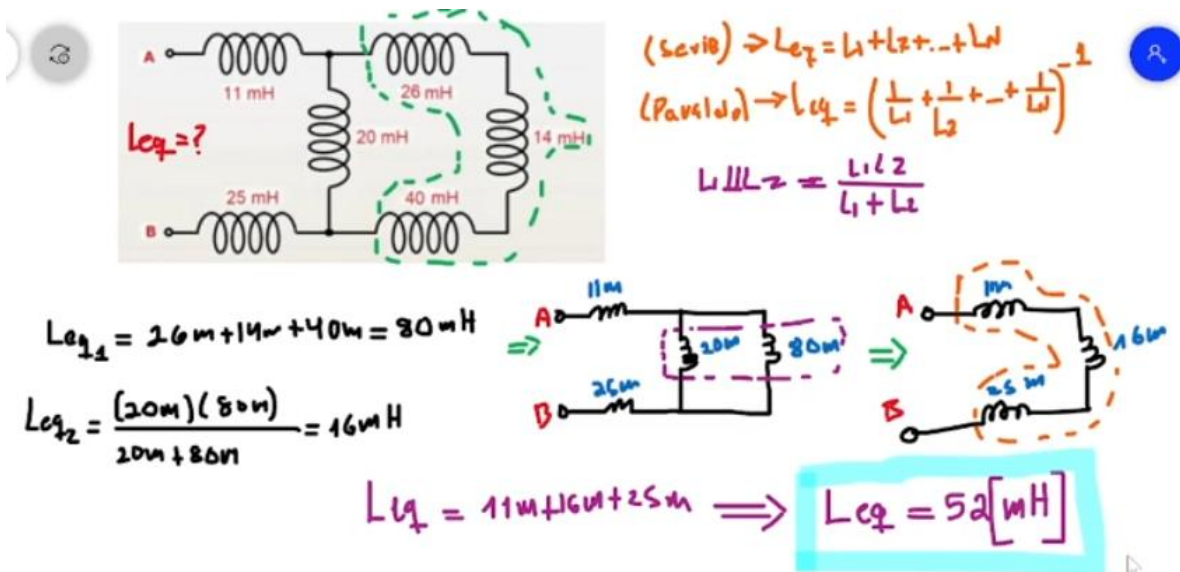
Resistance:



Capacitor:



Inductors:



For more help visit:
r/HP_Prime